

IRIS Toolbox

v4.3.0

Release Notes

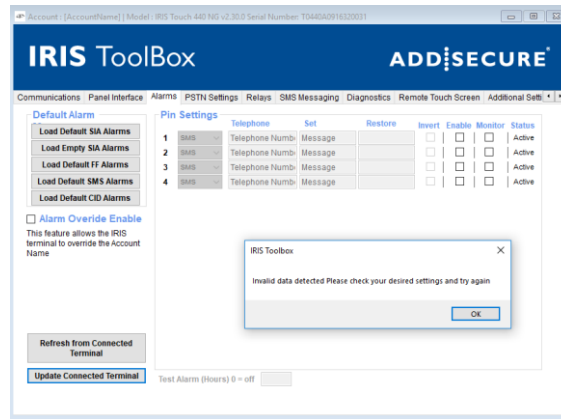
1 OVERVIEW

This document contains information regarding the changes made in the latest release of IRIS Toolbox.

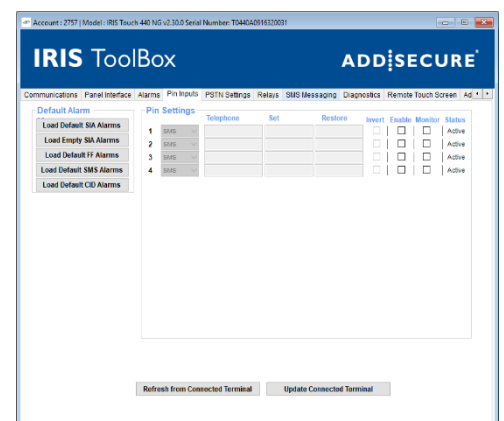
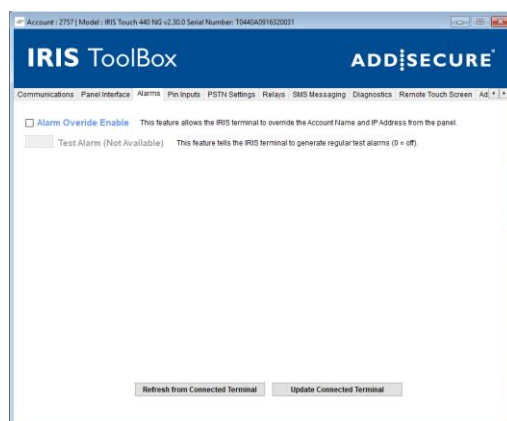
2 LATEST RELEASE, IRIS TOOLBOX 4.3.0

2.1 Improvement

A problem has been resolved with the previous release of IRIS Toolbox that causes an error message (see below) to be displayed when Alarm settings are changed on IRIS-4 terminals and IRIS Touch NG terminals with software earlier than versions 2.4.1.



Note that as part of this change an additional tab has been created to separate Alarms setting and Pin Inputs settings:



3 PREVIOUS RELEASES

3.1 IRIS TOOLBOX 4.2.0

- IRIS Toolbox has been updated to support periodic test alarms generated by the IRIS terminal.

3.2 IRIS TOOLBOX 4.1.0

- IRIS Toolbox has been updated to support the new IRIS-4 range.